

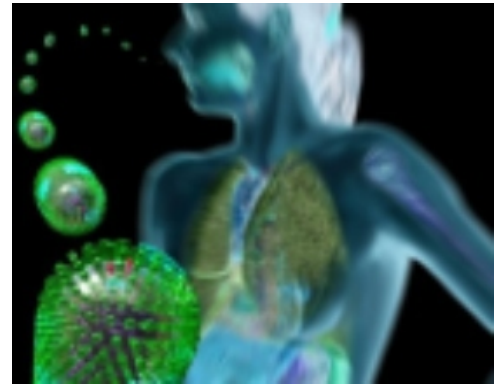


Shaklee's integrity legacy... is yours!

- ▶ Hedging your bets against inflation?
- ▶ Looking for a home-based business?
- ▶ Here's a priceless asset...

Protect against swine flu (and other critters)

- ▶ H1N1 virus declared a pandemic!
- ▶ What are the symptoms?
- ▶ Shaklee solutions...



Shaklee's indispensable, germ-fighting duo...

- ▶ They're lurking everywhere...
- ▶ Attack germs before they attack you!

This email newsletter has been sent to you compliments of:

Environmental Family Health, Inc.

Andy and Grace Anderson

9957 Bay Horse Circle

Flagstaff, AZ 86004

928.526.5052

grace@gracenandy.com

www.environmentalfamilyhealth.com



Making a Difference!

Through Shaklee, we are all...

In This Issue...

Page 1

Integrity legacy

Page 2

H1N1 & others

Page 3

Internal cleansing

Page 4

Germ-fighting duo

Shaklee... the ideal home-based business!

Did you know that 85% of multi-level marketing companies fail within the first 18 months? Most are not considered "stable" unless they've survived 3 years. Shaklee was started in 1956, and after all these years, it's still growing!

Shaklee is a member of the Direct Selling Association, a major industry organization which monitors MLM activities worldwide.

Shaklee is known for its integrity... and endows your business with that priceless legacy.



Shaklee's integrity legacy... is yours!

Are you searching for a way to supplement your income? Maybe you've watched your retirement savings dwindle. Perhaps your children's college fund has taken a nosedive. You may have even lost your job.

Many people today are looking for a way to hedge their bets against inflation and add to their savings. Are you among them?

If so, you might have noticed that while there are still many viable companies, most of them are not hiring. In fact, layoffs are the norm right now. So... a lot of people are looking for a home-based business they can start. While this is definitely a great option, there are many "scams" out there... companies that will take your money and run! How do you know if the opportunity you're looking at is as good as it claims to be?

You can compare products, compensation plans, management structure, sales tools, etc. But in the end, the worth of any company is found in its *philosophy*. From its inception, Shaklee's philosophy has been based upon the Golden Rule. *That standard of corporate integrity is rare... and a priceless asset when you need a home-based business you can start today!*

Success is yours for the acting. A man is never a failure until he acts like one.

Dr. Forrest C. Shaklee Sr.

Product Ordering Guide

Item Code	Product	Item Code	Product
20613	Defend & Resist Complex 90s	21200	Vivix 30 svgs
20411	Zinc Complex 120s	20616	Liver DTX Complex 90s
20084	Garlic Complex 240s	20376	Fiber Plan Tablets 75s
20960	NutriFeron 60s	20307	Fiber Plan Unflavored 60 svgs
20665	Energizing Soy Protein Vanilla	20144	Herb-Lax 60s
20670	Energizing Soy Protein Cocoa	20141	Herb-Lax 240s
20263	Vitalizer without Iron 30 svgs	00525	Basic-G Germicide 32 oz.
20271	Vitalizer with Iron 30 svgs	00430	GC Scour Off Paste 9 oz.
20270	Vitalizer Gold 30 svgs	00322	GC Germ Off Wipes 35 wipes

*Make a difference... share the Shaklee legacy!
It's a privilege!*

How to protect your family against H1N1 (and other critters)...

Natural flu fighters... the Shaklee Difference

Defend & Resist

Provides four clinically proven immune-supporting ingredients: echinacea, black elderberry, larch tree, and zinc. Each supports, enhances, and promotes a healthy immune response.

Zinc Complex

There are 200 different enzymes in your body that depend upon zinc. Their functions range from making genetic materials, DNA and RNA, to helping with the metabolism of fatty acids. Zinc promotes normal growth and development, and maintains normal immune function. In fact, zinc is clinically proven to help optimize immunity.

Zinc Complex is formulated with zinc gluconate, an easily absorbable and well-tolerated form of zinc, in a vegetarian base of alfalfa and roasted barley.

Garlic Complex

Did you know that... one garlic clove contains 5 mg of calcium, 12 mg of potassium, and more than 100 sulfuric compounds powerful enough to wipe out bacteria and infection? (In fact, garlic was used to prevent gangrene in both world wars).

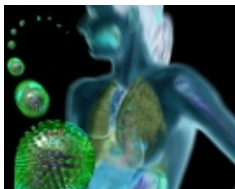
Two Shaklee **Garlic Complex** tablets provide the infection-fighting equivalent of one clove of garlic, along with the additional antioxidant power of spearmint and rosemary. Leaves no unpleasant aftertaste.

We're sure you've heard by now... the H1N1 virus (or swine flu) has been declared a pandemic! To be clear... to identify a disease as "pandemic" means it has become prevalent throughout an entire country, continent, or the whole world. But before you get too nervous, here are a few facts about H1N1:

According to the Mayo Clinic, "*The H1N1 flu, popularly known as swine flu, is a respiratory infection caused by an influenza virus first recognized in spring 2009. The new virus, which is officially called swine influenza A (H1N1), contains genetic material from human, swine and avian flu viruses.*

"Technically, the term 'swine flu' refers to influenza in pigs. Occasionally, pigs transmit influenza viruses to people. You can't catch swine flu from eating pork.

"Unlike typical swine flu, H1N1 flu spreads quickly and easily. In June 2009, when the infection's spread had been verified worldwide, the World Health Organization declared H1N1 flu a global pandemic."



H1N1 Symptoms

Swine flu symptoms in humans are similar to those of infection with other flu strains:

- Fever
- Cough
- Sore throat
- Body aches
- Headache
- Chills
- Fatigue
- Diarrhea
- Vomiting

Swine flu symptoms develop three to five days after you're exposed to the virus and continue

for about eight days, starting one day before you get sick and

continuing until you've recovered.

When to see a doctor

It's not necessary to call a doctor if you're generally healthy and you develop swine flu symptoms, such as fever, cough and body aches. Do call your doctor, however, if you have flu symptoms and you're pregnant or you have a chronic disease, such as emphysema or a heart condition.

If you get the flu

If you do come down with any type of flu,

these measures may help ease your symptoms:

Drink plenty of liquids. Choose water, juice and clear broth to prevent dehydration. Drink enough to have clear or pale yellow urine.

Rest. Get more sleep to help your immune system fight the infection.

If necessary, take over-the-counter medication to reduce symptoms such as fever and aches. Be sure any product you give to a child or adolescent does not contain aspirin, which could cause Reye's syndrome, a rare but potentially fatal disease.



Shaklee solutions

Your best defense against any virus is a powerful immune system. At the first sign of the flu, bolster your natural defenses, by taking **Defend & Resist Complex**, Shaklee **Zinc Complex**, and **Garlic Complex** 2-4 times a day until symptoms subside.

To build strong immunity all year long, take **NutriFeron**, **Energizing Soy Protein**, **Vitalizer**, **Vivix** and **Liver DTX Complex** on a regular basis.



Your internal cleansing arsenal...

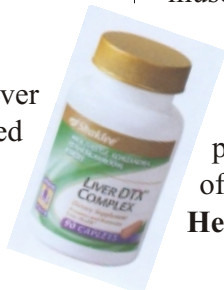
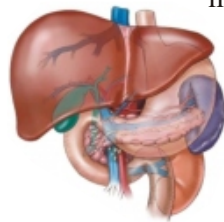
During cold and flu season, it is especially important to keep your digestive tract clean. When your colon is clogged with waste, it becomes a breeding ground for harmful bacteria to multiply.

While eating lots of fiber-rich foods supplemented by Shaklee **Fiber Plan Tablets** and **Fiber Plan Unflavored** will sweep the intestinal tract of excess waste, cleaning the liver with Shaklee **Liver DTX Complex** and stimulating natural peristalsis with **Herb-Lax** will provide greater digestive tract wellness.

Liver DTX Complex

Our largest and one of our most important organs, the liver, processes the toxins your body creates and consumes. It's a dangerous and demanding job that helps explain why the liver's one of the most frequently injured organs.

Liver DTX Complex, a unique botanical blend, promotes comprehensive liver health. Plant-based healers such as milk thistle seed extract,



dandelion, and turmeric help flush out toxins, thwart free radicals, and support liver regeneration. For comprehensive liver health, detoxify, protect, and renew with **Liver DTX Complex**.

Herb-Lax

It is a testimonial to Dr. Shaklee's vision of health and wellness that he introduced **Herb-Lax** long before anyone really knew about fiber's role in cleansing.

Herb-Lax works in a very different manner than fiber, however. Fiber cleanses through natural mechanical means; **Herb-Lax** works through the stimulating effect of its medicinal

herbs. In fact, the active ingredient in **Herb-Lax** is the herb senna. Senna has two actions. It triggers the secretion of fluids into the colon, causing softening of waste matter for easier elimination. It also stimulates the contraction of muscles within the colon to promote evacuation.

By helping to promote fast passage of digestive waste, **Herb-Lax**, along with



a fiber-rich diet, cleanses by giving toxins less time to harm healthy cells.

The botanicals in **Herb-Lax** also assist the entire body to filter poisons from blood and

cells, drastically reducing their ability to cause diseases like cancer and diabetes. In fact, the first step in a holistic approach to good health is detoxification. Many holistic health practitioners will tell you that almost any disease can be conquered with thorough detoxification of the body followed by flooding the cells with a river of nutrients from a natural diet and supplementation.

Herb-Lax... a gentle, herbal laxative... specifically targets irregularity and constipation associated with travel, illness, medications you may be taking, or a change in your diet.

So... for *everyday control* of bowel regularity and for detoxification, a diet rich in high-fiber foods is the right approach. But for *occasional irregularity*, **Herb-Lax** provides gentle herbal medicine.



Herb-Lax vs. chemical laxatives

Some people rely on chemical laxatives for a "quick-fix" for their problem, however these can cause permanent bowel damage and make the colon lazy.

All-natural **Herb-Lax**, on the other hand:

- Helps strengthen the colon while it relieves constipation
 - Does not cause physical dependency
 - Is safe to use over a period of time
 - Causes no side effects like stomach cramps or diarrhea
 - Does not cause weight gain even if used for a longer time
 - Dosage (4 tablets once or twice a day) doesn't increase gradually like medicinal purgatives
 - Is a dependable way to clean the colon
 - Causes no irritation to the intestine, whereas chemical laxatives may lead to cathartic colon... a poorly functioning colon, resulting from the chronic abuse of stimulant laxatives. Signs and symptoms of cathartic colon include bloating, a feeling of fullness, abdominal pain, and incomplete evacuation.
- Gentle, effective **Herb-Lax** contains 9 natural herbs... senna, senna leaf, buckthorn, culver's root, licorice, fennel, anise, rhubarb and blue malva... and nothing else!

Shaklee's indispensable, germ-fighting duo...



Basic-G benefits...

Used as directed, **Basic-G** tackles over 40 pesky microbes, including several animal viruses. That makes it an excellent choice for use in the kitchen, bathroom, or pet area. In addition to being economical... *one quart makes up to 64 gallons...* it's also EPA registered.

Germ Off benefits...

- ✓ Kills 99.9% of *Salmonella* and *E. coli* germs
- ✓ Kills odor-causing bacteria
- ✓ Disinfects
- ✓ Deodorizes
- ✓ 35 durable 7" x 8" wipes in a handy recyclable container.

Making a Difference! is not an official Shaklee publication. It is compiled from publicly available information and is published for educational purposes only. No promises or guarantees are intended or implied. Copyright © November, 2009 SHAIDS LLC • www.ShaidsShop.com • lifedreams9@msn.com • 888-395-0136

They're lurking everywhere... bacteria, fungi, and viruses that can wreak havoc on your family's health and safety!

To protect those you love, be sure to keep Shaklee's germ-fighting duo (**Basic-G** and **Get Clean Germ Off Disinfecting Wipes**) handy... in the kitchen, bathroom, children's rooms, laundry room, pet areas and garage... ready to attack germs before they attack you!

Basic-G

Get started by mixing ½ ounce of **Basic-G** in 1 gallon of water. Then



mop floors and wipe down walls and other surfaces which can attract germ-laden dust and dirt. Wash children's toys and furniture with the

same solution. (Be sure to rinse well.) Then scrub the tub, shower, sinks and toilets with **Get Clean Scour Off Heavy Duty Paste**, wipe down with the **Basic-G** solution, and rinse.

Germ Off Wipes

Once you've finished the heavy cleaning, wipe counters, fixtures and other surfaces with **Germ Off Disinfecting**

Wipes. Keep them handy all around the house for quick, streak-free clean-ups.

While you're in a cleaning mood, don't forget door knobs, your computer keyboard and mouse, telephone receivers and keypads. And... don't forget to tackle family automobiles. They are harbingers of germs, especially on handrests and steering wheels.



NOTE: While many people keep Germ Off Wipes handy for disinfecting hands, Shaklee does not recommend or endorse this use.

With Shaklee, It's Easy To...

- Enjoy the benefits of improved health!
- Have more energy and vitality!
- Enjoy natural beauty... inside and out!
- Protect our fragile environment!
- Achieve financial independence... forever!



Take Charge of your life today... with Shaklee!